






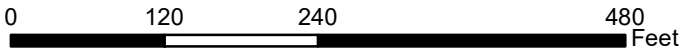


**Shepards Brook Interceptor Subsystem**

-  Manhole to be Inspected
-  Interceptor to be Inspected
-  Town Sewer
-  Town Boundary
-  Manholes
-  Approximate Wetland Boundaries
-  District Interceptor

**MAP 1**



1 inch = 150 feet







**Shepards Brook Interceptor Subsystem**

	Manhole to be Inspected		Town Sewer
	Interceptor to be Inspected		Town Boundary
	Manholes		Approximate Wetland Boundaries
	District Interceptor		

**MAP 2**

0 120 240 480 Feet

1 inch = 150 feet

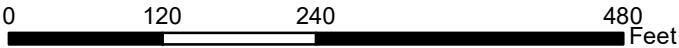




**Shepards Brook Interceptor Subsystem**

- Manhole to be Inspected
- Interceptor to be Inspected
- Manholes
- District Interceptor
- Town Sewer
- Town Boundary
- Approximate Wetland Boundaries

**MAP 3**



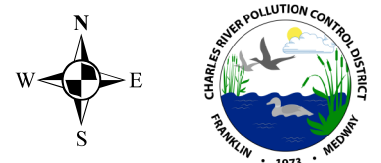
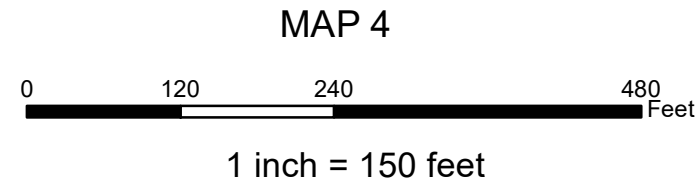
1 inch = 150 feet







- Shepards Brook Interceptor Subsystem**
- Manhole to be Inspected
  - Interceptor to be Inspected
  - Manholes
  - District Interceptor
  - Town Sewer
  - Town Boundary
  - Approximate Wetland Boundaries



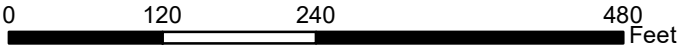




**Shepards Brook Interceptor Subsystem**

-  Manhole to be Inspected
-  Interceptor to be Inspected
-  Manholes
-  District Interceptor
-  Town Sewer
-  Town Boundary
-  Approximate Wetland Boundaries

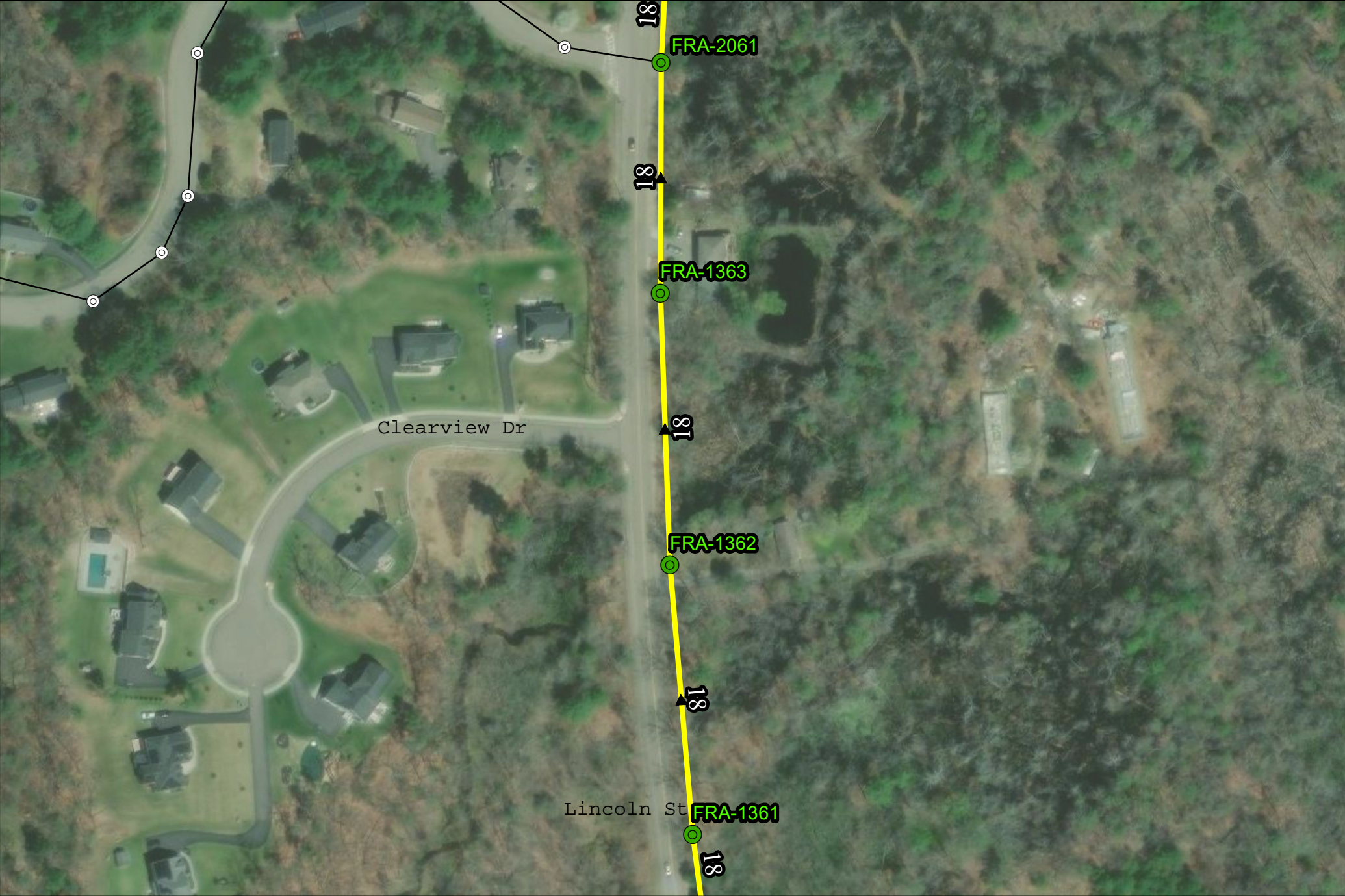
**MAP 5**



1 inch = 150 feet



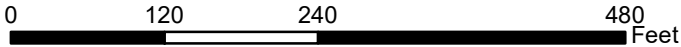




**Shepards Brook Interceptor Subsystem**

-  Manhole to be Inspected
-  Interceptor to be Inspected
-  Manholes
-  District Interceptor
-  Town Sewer
-  Town Boundary
-  Approximate Wetland Boundaries

**MAP 6**



1 inch = 150 feet



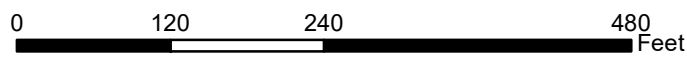




**Shepards Brook Interceptor Subsystem**

- Manhole to be Inspected
- Interceptor to be Inspected
- Town Sewer
- Town Boundary
- Manholes
- Approximate Wetland Boundaries
- District Interceptor

**MAP 7**



1 inch = 150 feet



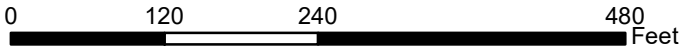




**Shepards Brook Interceptor Subsystem**

- Manhole to be Inspected
- Interceptor to be Inspected
- Town Sewer
- Town Boundary
- Manholes
- Approximate Wetland Boundaries
- District Interceptor

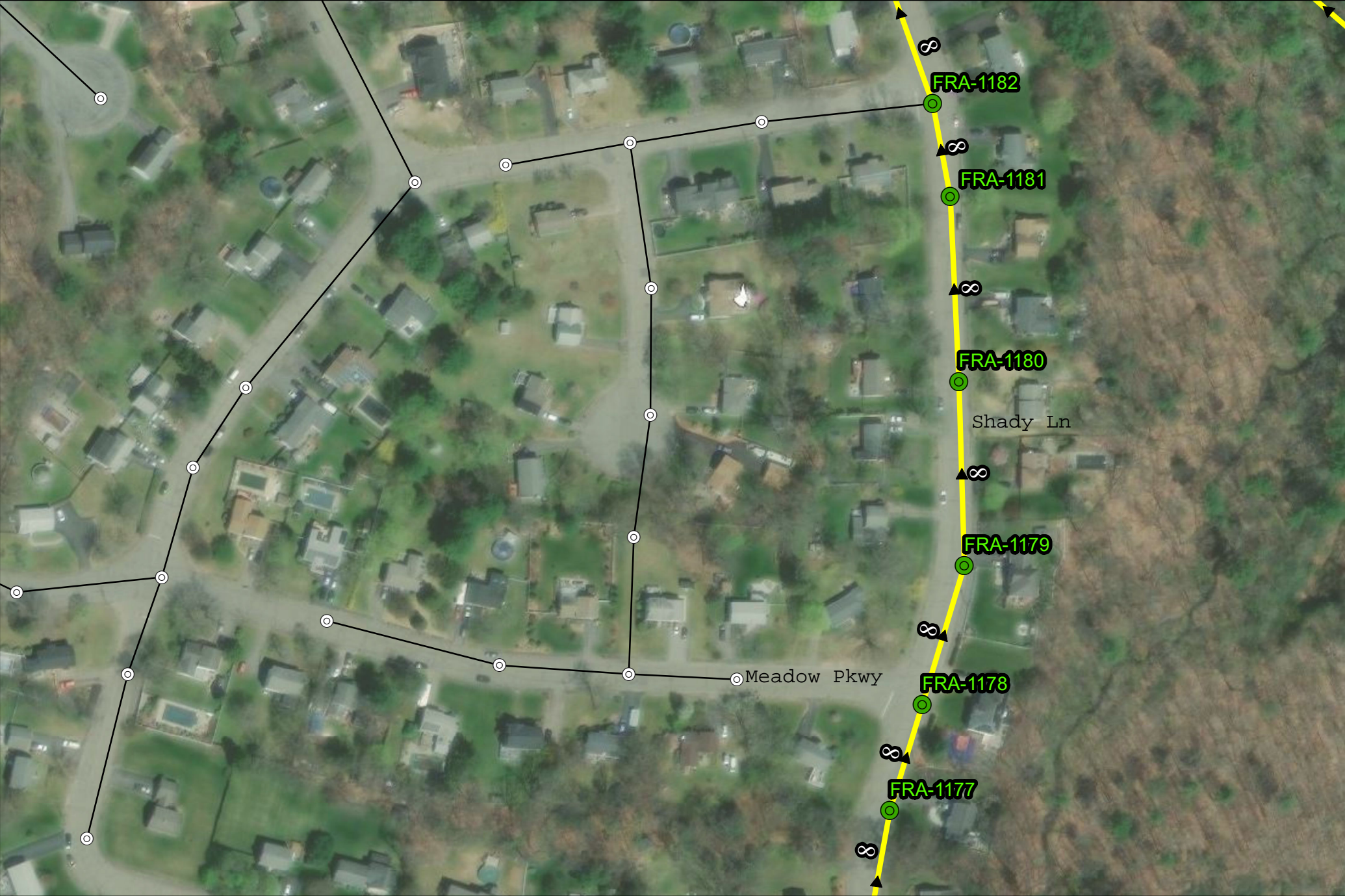
**MAP 8**



1 inch = 150 feet

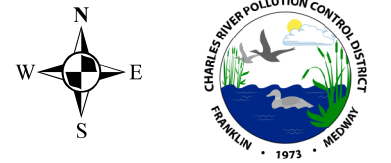
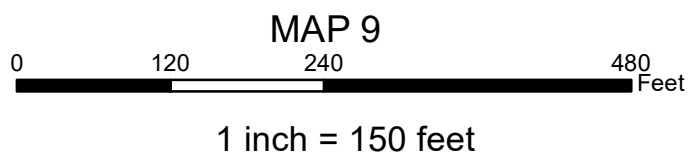




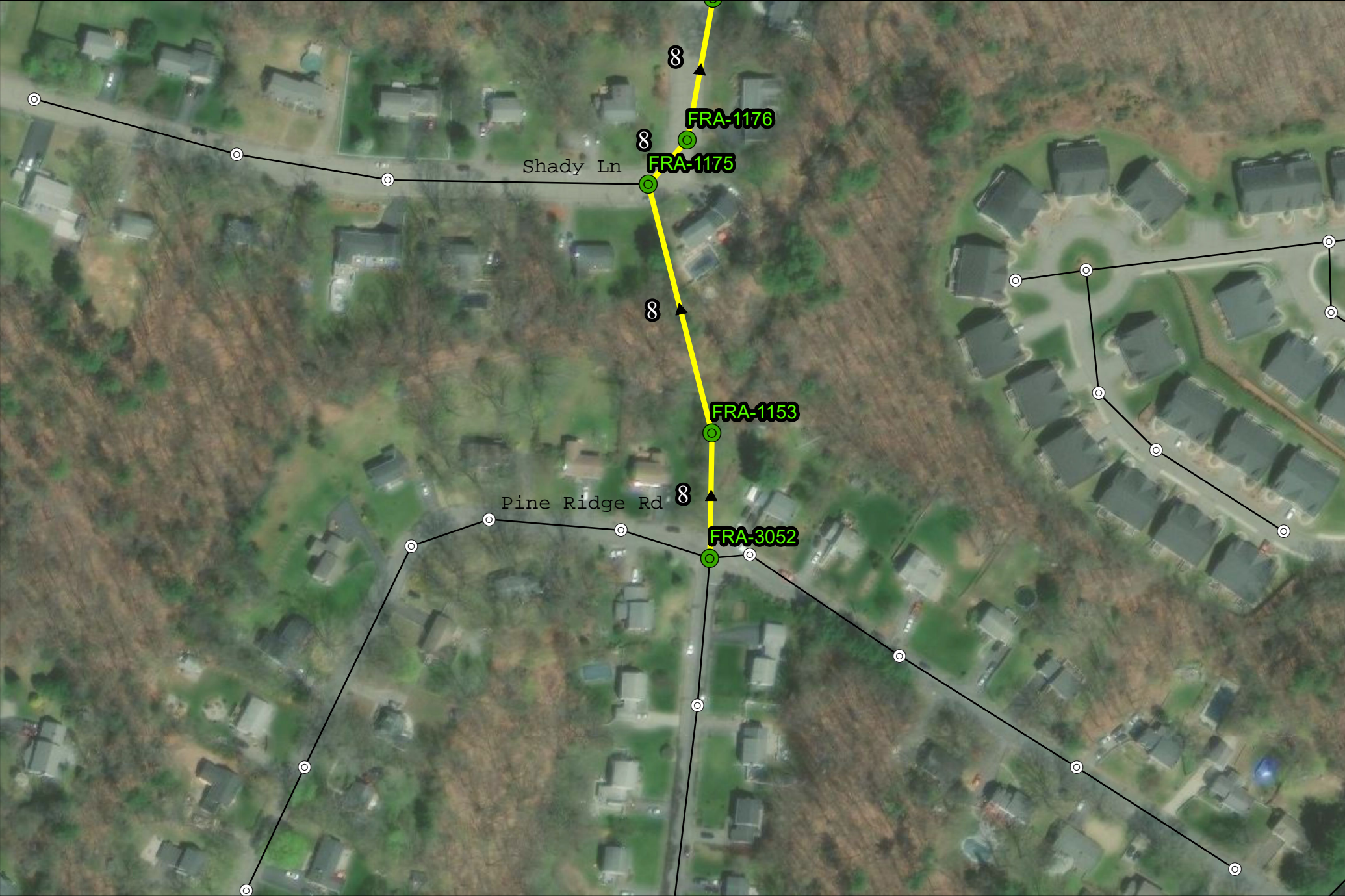


**Shepards Brook Interceptor Subsystem**








- Manhole to be Inspected
- Town Sewer
- Interceptor to be Inspected
- Town Boundary
- Manholes
- Approximate Wetland Boundaries
- District Interceptor



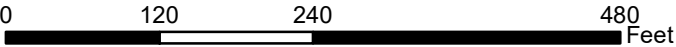




**Shepards Brook Interceptor Subsystem**

-  Manhole to be Inspected
-  Interceptor to be Inspected
-  Manholes
-  Town Sewer
-  Town Boundary
-  Approximate Wetland Boundaries
-  District Interceptor

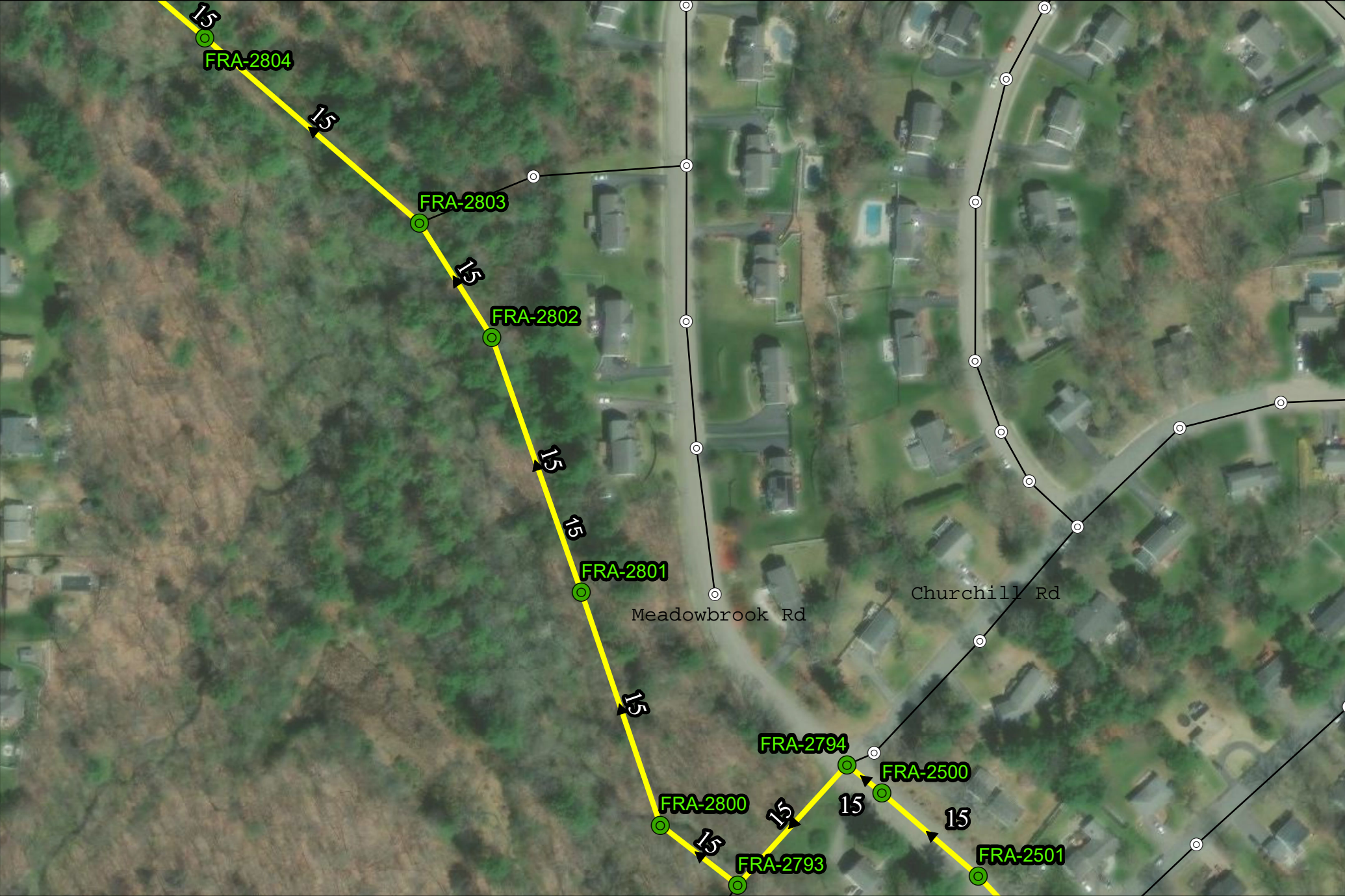
**MAP 10**



1 inch = 150 feet



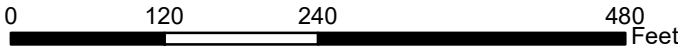




**Shepards Brook Interceptor Subsystem**

- Manhole to be Inspected
- Interceptor to be Inspected
- Manholes
- District Interceptor
- Town Sewer
- Town Boundary
- Approximate Wetland Boundaries

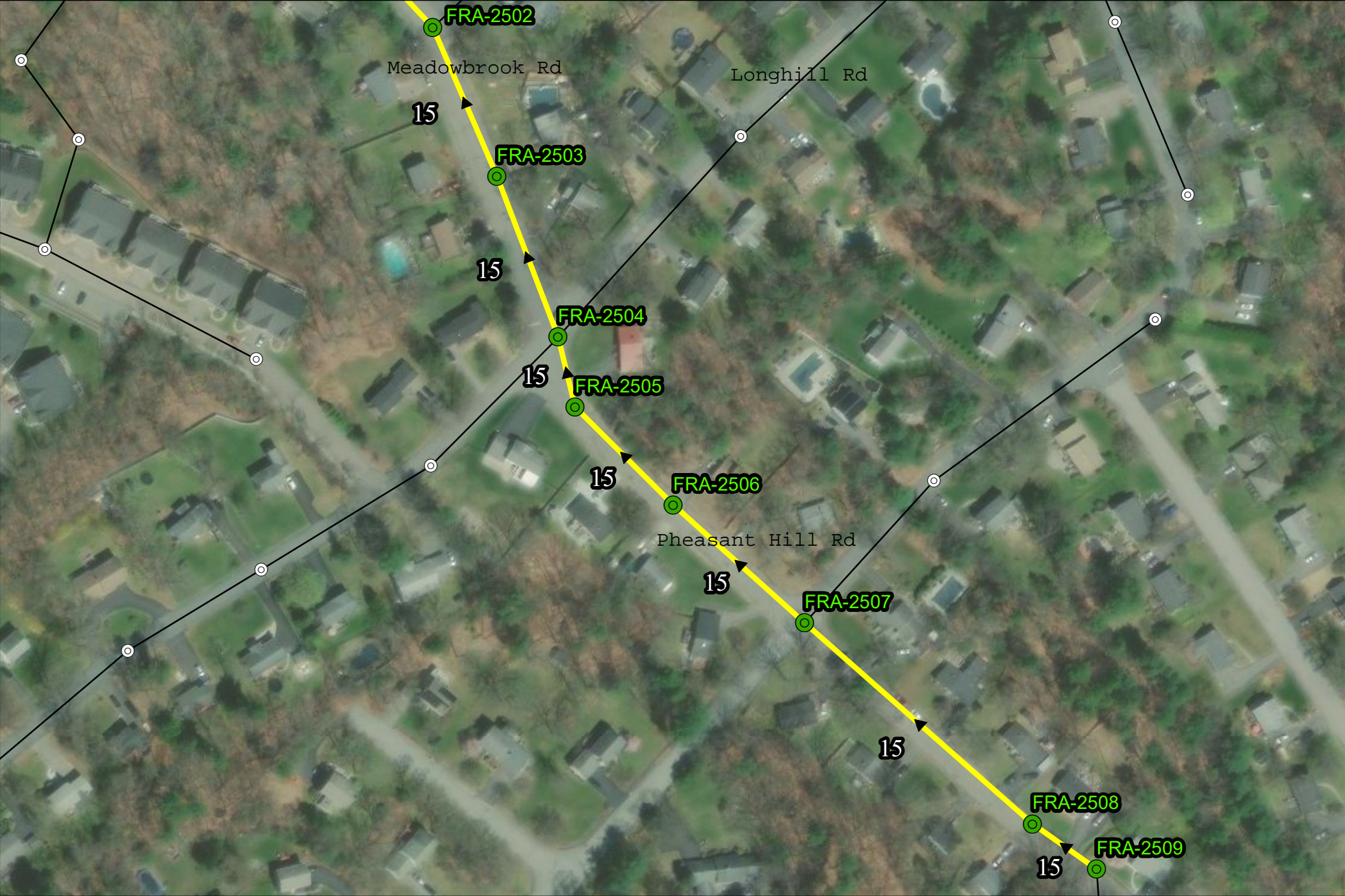
**MAP 11**



1 inch = 150 feet



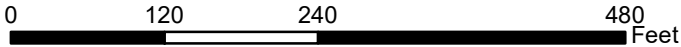




**Shepards Brook Interceptor Subsystem**

-  Manhole to be Inspected
-  Interceptor to be Inspected
-  Manholes
-  District Interceptor
-  Town Sewer
-  Town Boundary
-  Approximate Wetland Boundaries

**MAP 12**



1 inch = 150 feet



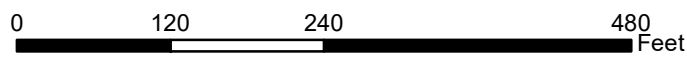




**Shepards Brook Interceptor Subsystem**

- Manhole to be Inspected
- Town Sewer
- Interceptor to be Inspected
- Town Boundary
- Manholes
- ▨ Approximate Wetland Boundaries
- District Interceptor

**MAP 13**



1 inch = 150 feet



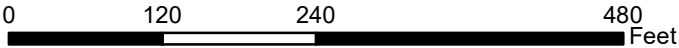




**Shepards Brook Interceptor Subsystem**

- Manhole to be Inspected
- Interceptor to be Inspected
- Manholes
- District Interceptor
- Town Sewer
- Town Boundary
- Approximate Wetland Boundaries

**MAP 14**



1 inch = 150 feet

